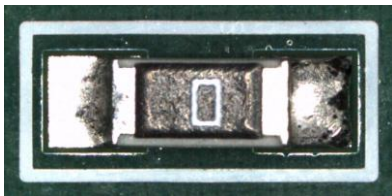


TECHNOLOGICALLY ADVANCED

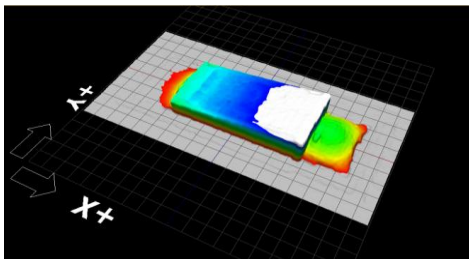
MV-7 OMNI 2D/3D Series

MIRTEC

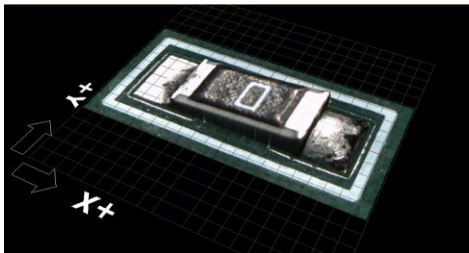
- Five Camera 2D/3D In-Line AOI System
- Exclusive **FIFTEEN MEGA PIXEL** ISIS® Vision System
- Advanced Six Phase Color Lighting Technology
- 10 Micron / Pixel Precision Telecentric Compound Lens Design
- Integrated Ten Mega Pixel **SIDE VIEWER**® Camera System
- Precision Linear Drive Motor System
- Extremely Simple Programming and Operation



Ultra High Resolution 2D Image



3D Shape Image - Lifted Device



Advanced 2D/3D Image Processing



- Exclusive **OMNI-VISION**® 2D/3D Inspection Technology
- Advanced Digital Multi-Frequency Quad Moiré Design
- Superior Lifted Lead Detection for Gull Wing Devices
- True Co-Planarity Inspection of Chips, BGAs and Other Height Sensitive Devices



www.mirtec.com